

Corporate Parenting Board

17 July 2017

Performance Management Report

Introduction

This report outlines performance for Children’s Services for the Corporate Parenting Board. With some indicators, we are unable to extract the information from our electronic systems. Processes are being considered/put in place to enable us to collate this information going forward. Performance is reported against identified indicators in relation to the following areas: **Children in Care, Care Leavers and Adoptions, Sufficiency and Workforce.**

Theme	Section	Responsible Manager Narrative	Role
Children in Care	Children Entering Care	Linda Patterson	Senior Manager - Improvement
	Children In Care	Linda Patterson	Senior Manager - Improvement
	Children Leaving Care	Julie Mepham	Service Manager, Corporate Parenting
	LAC Moves	Julie Mepham	Service Manager, Corporate Parenting
	LAC Reviews & Visits	Kerrie Scraton	Interim Senior Manager, Safeguarding Assurance
	Missing LAC	Julie Mepham	Service Manager, Corporate Parenting
	LAC Attainment	Janet Tolley	Virtual School Head Teacher
	LAC Health	Gill Addy	Designated Nurse for Looked after Children/Locala
	LAC Convictions	Richard I Smith	HoS, FSCP
Care Leavers & Adoption	Care Leavers	Julie Mepham	Service Manager, Corporate Parenting
	Adoption	Linda Patterson	Senior Manager - Improvement
	Adopters	Sarah Johnal	Service Manager, One Adoption
	Sufficiency	Rob Finney	Service Manager, Corporate Parenting
Workforce	Capacity	Andrew Wainwright	Business Manager

Key to Trends

- ↑ Increasing and higher is better
- ↓ Decreasing and lower is better
- ↑ Increasing but lower is better
- ↓ Decreasing but higher is better
- ← No change

Data is from CareFirst (unless stated otherwise) as at 30 April 2017.

Children in Care

Children Entering Care:

	Feb-17	Mar-17	Trend Mar	Apr-17	Trend April	Performance Overview
4.01.01 Number of Children entering care	35	25	↓	14	↓	The number of children entering care reduced to 14 in April 17. This is the lowest figure since 13 in August 26. Monthly average since May 16 has been 26 children.
4.01.02 Characteristics of children entering care	See table 1	See table 1		See table 1		<p>Gender: The trend is more males than females coming into care since May 16 (65.4% May 16 to 42.3% Apr 17). The % of males to females has spiked in Apr 17 as a % but the overall trend in actual numbers is down from the previous 2 months.</p> <p>Ethnicity: There are no particular trends for ethnicities, with varying spikes through the year.</p> <p>Age: There is an increase in under 1's in Apr 17 (6) from Mar 17 (0)</p>
4.01.03 Children entering care by reason	See table 2	See table 2		See table 2		We have seen a reduction in the children entering care in April 17 (14) from Mar 17 (26) and Feb 17 (35). N1 – Abuse & Neglect has reduced in Apr 17 (9) from Mar 17 (22). The N5 - Family Dysfunction category has increased in Apr 17 (5), higher than Mar 17 (2).
4.01.04 Children entering care by placement: Foster Care	80.0% (28)	80.0% (20)	↔	71% (10)	↓	<p>General trend is an increase in the use of foster care alongside a reducing number of children entering care. This percentage in fostering has increased from 58% in May 16 to 71% currently. There has been a steady reduction in % of Residential Placements since May 16, (23.3%) to low of 5.5% in Feb 17, but rising back up in Apr 17 to 14.3% (however this is just 2 children). Placements with Parents has also decreased from a high of 38% in Aug 16 to 0% in Apr 17. Reasons for Other : YOI or Prison and Z1 Other</p> <p>Placed with Parents Do we know the reason for drop? Is this planned</p>
Residential	5.7% (2)	8.0% (2)	↑	14.3% (2)	↑	
Placed For Adoption	0.0%	0.0%	↔	0.0%	↔	
Placed with Parents	14.3% (5)	12.0% (3)	↓	0% (0)	↓	
Other	0.0%	0.0%	↔	14.3% (2)	↑	

Children in Care

Children Entering Care:

	Feb-17	Mar-17	Trend Mar	Apr-17	Trend April	Performance Overview
4.01.05 Children entering care by placement : Within LA Boundary	77.1% (27)	80.0% (20)	↑	79% (11)	↓	In Apr 17 is 78.6% (11) children were placed within Kirklees and 21.4% (3) were placed outside Kirklees. This is slight drop from Mar 17 (80.8%) but an overall improvement from May 16 when 69.2% (18) children were placed within Kirklees and 30.8% (8) were placed outside Kirklees.
Outside LA boundary	22.9% (8)	20.0% (5)	↓	21% (3)	↑	
4.01.07 Children entering care, placement 20 miles or more from home :						At Apr 17 21.4% (3) children were placed outside 20 miles from their home. 42.6% (6) children were placed Inside 20 miles . The Inside 20 miles Placements for Apr 17 has decreased to 42.9% (6) against Mar 17 92% (23). 35.7% (5) children did not have an address with postcode that could be reported against (address conf/unavailable/not entered).
Outside 20 miles	11.4% (4)	8.0% (2)	↓	21% (3)	↑	
Inside 20 miles	80.0% (28)	92.0% (23)	↑	43% (6)	↓	
No Postcode	8.6% (3)	0.0%	↓	36% (5)	↑	
4.01.08 Children entering care by legal status	<i>See table 3</i>	<i>See table 3</i>		<i>See table 3</i>		In April 17 the C1-Interim Care Order percentage of 85.7% (12 children) is significantly higher than March 30.8% (8). V2-S20 CA 1989 - single placement of 5.9% (1) in April 17 is significantly lower than March 48% (12)



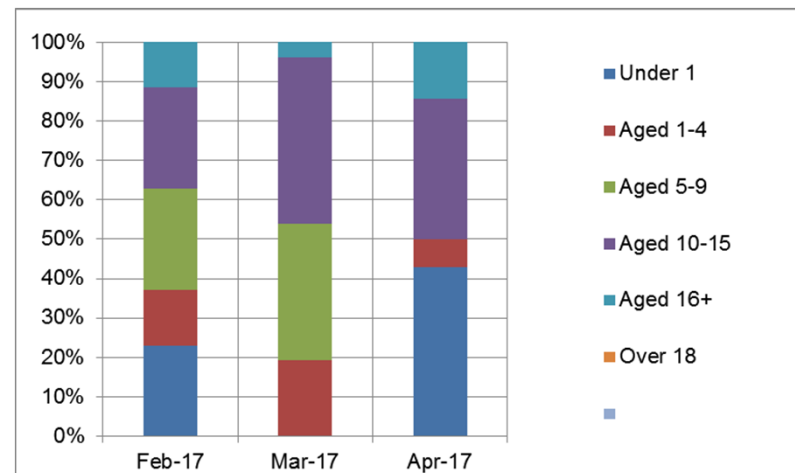
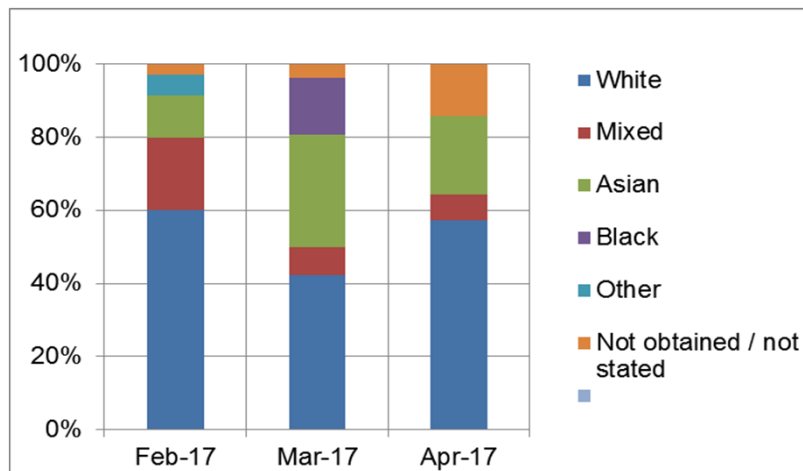
Children in Care

Children Entering Care - Table 1: 4.01.02 Characteristics

	Feb-17	Mar-17	Apr-17
Female	51.4%	57.7%	28.6%
Male	48.6%	42.3%	71.4%

Ethnicity %	Feb-17	Mar-17	Apr-17
White	60.0%	42.3%	57.1%
Mixed	20.0%	7.7%	7.1%
Asian	11.4%	30.8%	21.4%
Black	0.0%	15.4%	0.0%
Other	5.7%	0.0%	0.0%
Not obtained / not stated	2.9%	3.8%	14.3%

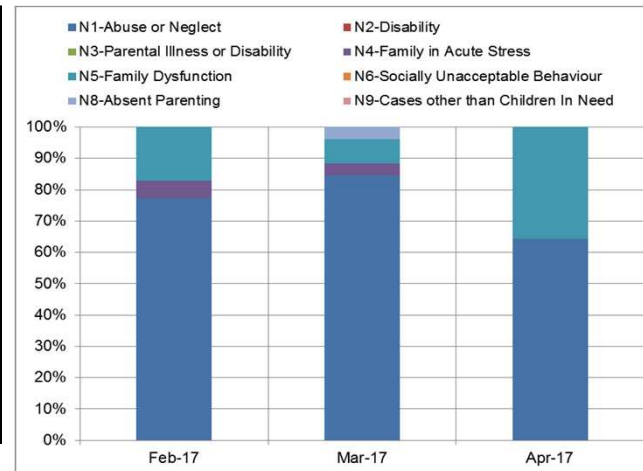
Age Range	Feb-17	Mar-17	Apr-17
Under 1	22.9%	0.0%	42.9%
Aged 1-4	14.3%	19.2%	7.1%
Aged 5-9	25.7%	34.6%	0.0%
Aged 10-15	25.7%	42.3%	35.7%
Aged 16+	11.4%	3.8%	14.3%
Over 18	0.0%	0.0%	0.0%



Children in Care

Children Entering Care - Table 2: 4.01.03 Reason

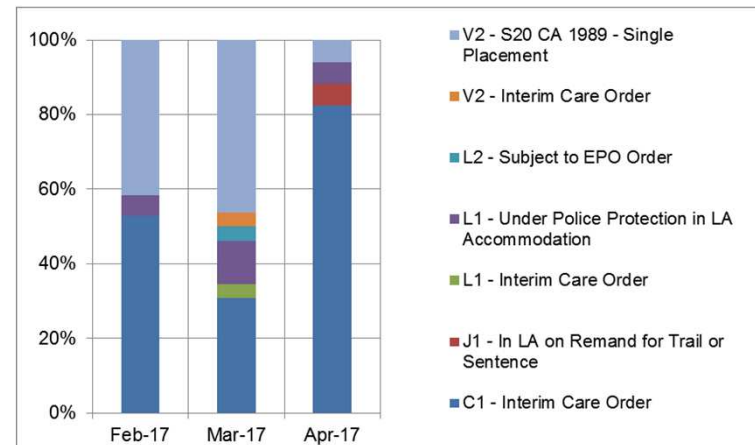
	Feb-17	Mar-17	Apr-17
N1-Abuse or Neglect	77.1%	84.6%	64.3%
N2-Disability	0.0%	0.0%	0.0%
N3-Parental Illness or Disability	0.0%	0.0%	0.0%
N4-Family in Acute Stress	5.7%	3.8%	0.0%
N5-Family Dysfunction	17.1%	7.7%	35.7%
N6-Socially Unacceptable Behaviour	0.0%	0.0%	0.0%
N8-Absent Parenting	0.0%	3.8%	0.0%
N9-Cases other than Children In Need	0.0%	0.0%	0.0%



Children in Care

Children Entering Care - Table 3: 4.01.08 Legal Status

	Feb-17	Mar-17	Apr-17
C1 - Interim Care Order	52.8%	30.8%	82.4%
J1 - In LA on Remand for Trail or Sentence	0.0%	0.0%	5.9%
L1 - Interim Care Order	0.0%	3.8%	0.0%
L1 - Under Police Protection in LA Accommodation	5.6%	11.5%	5.9%
L2 - Subject to EPO Order	0.0%	3.8%	0.0%
V2 - Interim Care Order	0.0%	3.8%	0.0%
V2 - S20 CA 1989 - Single Placement	41.7%	46.2%	5.9%



Head of Service Narrative – Linda Patterson June 17

No change from May 2017. All admissions to care are discussed and agreed with the Service Director. Any requests for children to become subject to care proceedings are discussed and agreed at the weekly Legal Gateway Panel, chaired by the Service Director and attended by Heads of Service. Cases are then tracked via Panel and through the Case Manager to ensure progress in achieving permanence for children. All final Care Plans are signed off within Permanence Panel in advance of the 4 month LAC Review and in advance of final evidence being submitted to court.

Work is ongoing to enhance the Edge of Care Offer and implement a Resources Panel to ensure that wherever possible, children are sustained at home with the right package of support and where children need to come into care, this is done in a planned manner based on assessment of need.



Children in Care

Children in Care

	Feb-17	Mar-17	Mar Trend	Apr-17	Apr Trend	Target	Performance Overview	
4.02.01 Children in care - numbers in care	70.0 (692)	70.7 (699)	↑	69.8% (690)	↓		The current position in April 17 is 690 children in care. This is lower than 699 in Mar 17. The trend had been steadily increasing since May 16 (677 children) with a spike in Dec 16 of 705 children..	
4.02.02 Characteristics of children into care	See Table 1	See Table 1		See Table 1			There is no discernible trend from May 16 to Apr 17	
4.02.03 Placement type and provider Foster Care	70.1% (495)	70.7% (494)	↑	70.4% (486)	↓		There are no significant changes in the placement split for LAC. The “residential” heading includes supported accommodation and residential schools. Excluding these placements, there were 84 LAC placed in residential or 12.1%.	
Residential	16.6% (115)	16.3% (114)	↓	16.7% (115)	↔			
Placed For Adoption	3.0% (21)	3.6% (25)	↑	3.0% (21)	↓			
Placed with Parents	10.0% (69)	9.2% (64)	↓	9.3% (64)	↔			
Other	0.3% (2)	0.3% (2)	↔	0.6% (4)	↑			
4.02.07 Children subject to a care order and placed at home - full, interim and section 38b							<i>Improvement Plan Success Measure: Reduction in the number of children currently placed at home on care order from 45 to 30 by July 2017 with a further decrease from 30 to 20 by December 2017.</i>	
Placed at home	51 (9.4%)	42 (6%)	↓	64 (9.3%)	↑	30		In April 17, 64 (9.3%) children are placed at home. This is 34 children above the Target of 30 children. However, this is lower than the 9.4% (51) of children placed at home in Feb 17. The annual % trend is fairly static with slight increase to a peak of 81 (11.8%) in Oct 16.
Not at home	641	657	↑	626	↓			

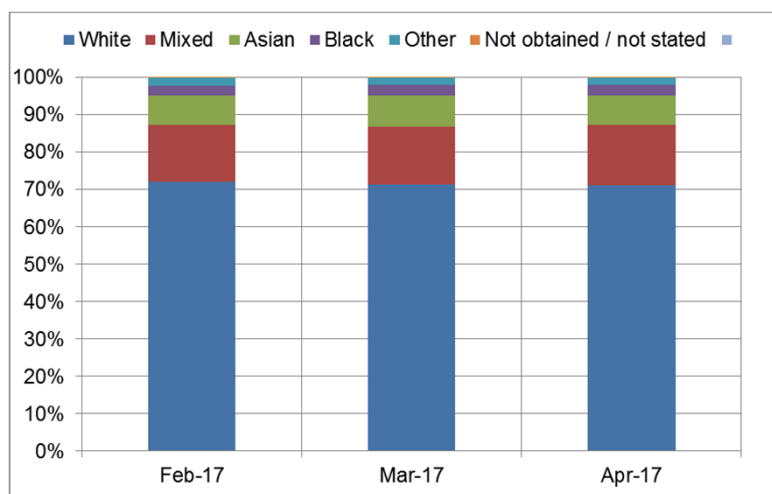


Children in Care

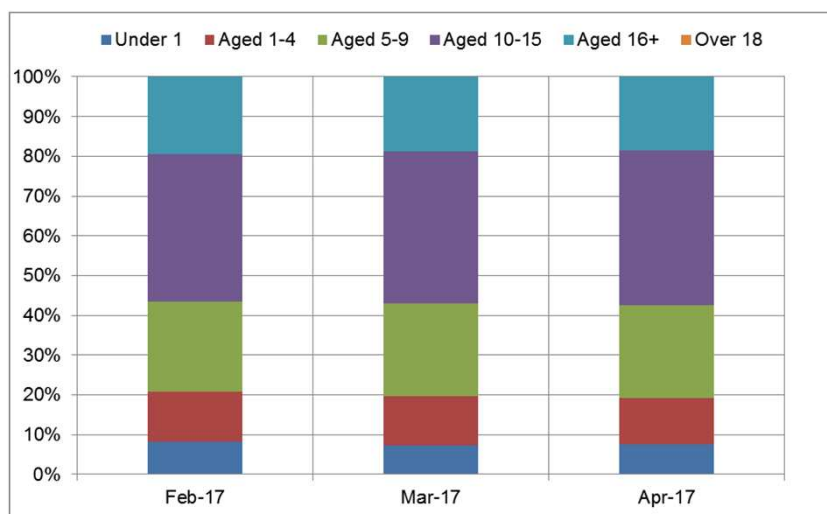
Children in Care: Table 1: 4.02.02 Characteristics

	Feb-17	Mar-17	Apr-17
Female	47.0%	47.9%	47.4%
Male	53.0%	52.1%	52.6%

	Feb-17	Mar-17	Apr-17
White	72.1%	71.2%	71.0%
Mixed	15.2%	15.5%	16.2%
Asian	7.9%	8.4%	8.0%
Black	2.5%	2.9%	2.8%
Other	2.2%	1.9%	1.9%
Not obtained / not stated	0.1%	0.1%	0.1%



Age Range	Feb-17	Mar-17	Apr-17
Under 1	8.1%	7.3%	7.5%
Aged 1-4	12.7%	12.4%	11.7%
Aged 5-9	22.7%	23.3%	23.3%
Aged 10-15	37.0%	38.1%	38.8%
Aged 16+	19.5%	18.9%	18.6%
Over 18	0.0%	0.0%	0.0%



Children in Care

Children in Care

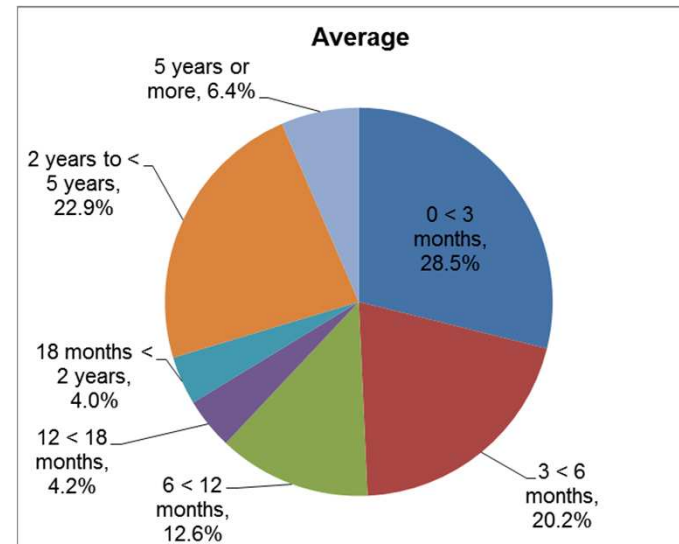
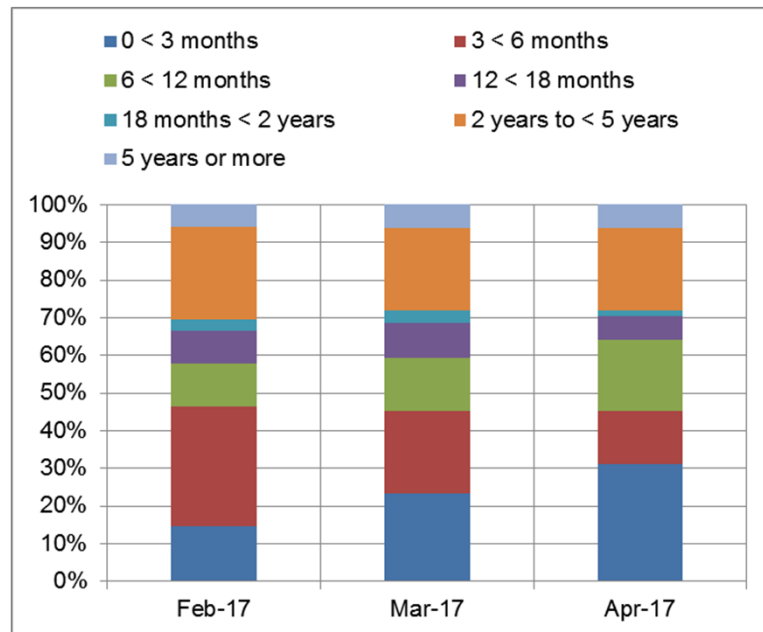
	Feb-17	Mar-17	Mar Trend	Apr-17	Apr Trend	Target	Performance Overview
4.02.08 Duration of stay at home under a care order	<i>see Table 2</i>	<i>see Table 2</i>		<i>see Table 2</i>			<ul style="list-style-type: none"> LAC in care <3 months has increased from 14.5% in Feb 17, to 31.3.% in Apr 17. This had decreased steadily from a peak of 41.7% in Sept 16. LAC in care 3-6 months has decreased from 31.9% Feb 17, to 14.1% Apr 17. LAC in care 6-12 months has increased from 11.6% Feb 17 to 18.8% Apr 17. This has been steadily increasing from 8.8% in May 16. LAC in care between 12 mths and 5 yrs has decreased from Feb-Apr 17. LAC in care 5+ years has increased slightly 5.8% Feb 17 to 6.3% Apr 17.
4.03.01 Details of Children coming back into care - trend - unplanned	3	2	↓	0	↓		There were no children who came back into care during April 2017. Over the past 12 months (May 16 to Apr 17) the average duration of last period of care was 285 days, with the shortest being 3 days (Dec 16) and longest 1,202 days (Oct 16).

Children in Care

Children in care - Table 2: 4.02.08 Duration of Stay

Duration Range	Feb-17	Mar-17	Apr-17	Average
0 < 3 months	10	15	20	20
3 < 6 months	22	14	9	14
6 < 12 months	8	9	12	9
12 < 18 months	6	6	4	3
18 months < 2 years	2	2	1	3
2 years to < 5 years	17	14	14	16
5 years or more	4	4	4	5
Total	69	64	64	71

Duration Range %	Feb-17	Mar-17	Apr-17	Average
0 < 3 months	14.5%	23.4%	31.3%	28.5%
3 < 6 months	31.9%	21.9%	14.1%	20.2%
6 < 12 months	11.6%	14.1%	18.8%	12.6%
12 < 18 months	8.7%	9.4%	6.3%	4.2%
18 months < 2 years	2.9%	3.1%	1.6%	4.0%
2 years to < 5 years	24.6%	21.9%	21.9%	22.9%
5 years or more	5.8%	6.3%	6.3%	6.4%



Head of Service Narrative – Linda Patterson – June 2017

Between December 2016 and March 2017, we held a dedicated Placement with Parents Permanence Panel to review all the children who are placed at home on Care Orders. Responsibility for ongoing reviewing was given to the IROs and Service from 1.4.17. This focus is beginning to positively impact on the numbers of children placed at home with parents - in that numbers are reducing where appropriate. Legal Gateway now meets weekly and is more robust and alternative plans are being put in place to support families to keep children at home without an Order.

The figure of 64 children on 4.02.03 for Placement with Parents for April 2017 also includes children who are placed at home under Section 38(6) of the Children Act as we have no means on Care First to separate these out. This gives a false picture of the number of PWP cases. **LP: I would need to see the raw data for the 64 children if you want me to give an accurate figure of how many are 'true' PWP as of that date.**

Children in Care

Children Leaving Care

	Feb-17	Mar-17	Mar Trend	Apr-17	Apr Trend	Performance Overview
4.04.01 Children leaving care	16	19	↑	20	↑	The number of Children leaving care in Apr 17 was 20, which is above the Mar 17 figure of 19. The average is 24 children per month.
4.04.02 Characteristics of children leaving care - gender, age range & ethnicity	See table 1	See table 1		See table 1		Gender: Of 284 care leavers in last 12 months, 39.4% (112) were female and 60.6% (172) male. Ethnicity & Age: There is no discernible trend from May 16 to Apr 17
4.04.03 Children leaving care by reason Positive Outcome	16 (100%)	14 (74%)	↓	20 (100%)	↑	In Apr 17, 20 (100%) of children left care with a positive outcome. This has improved from 14 (75%) in March 17. For the rolling 12 months, 94.7% (269) children have left care with positive outcomes and 5.3% (15) with negative outcomes.
Other Outcome	0	5 (26%)	↑	0	↓	

Head of Service Narrative – Julie Mepham (Corporate Parenting)

In the 3 months to the end of April, there were 15 adoptions, 24 children and young people who returned home as planned and 6 who moved into independent living. However, 6 had left care for an unspecified reason. This will be investigated by the service to ensure correct recording. In the year to date only 2 young people have left care due to being sentenced to custody, both of whom were in Summer 2016. This is a very positive outcome.

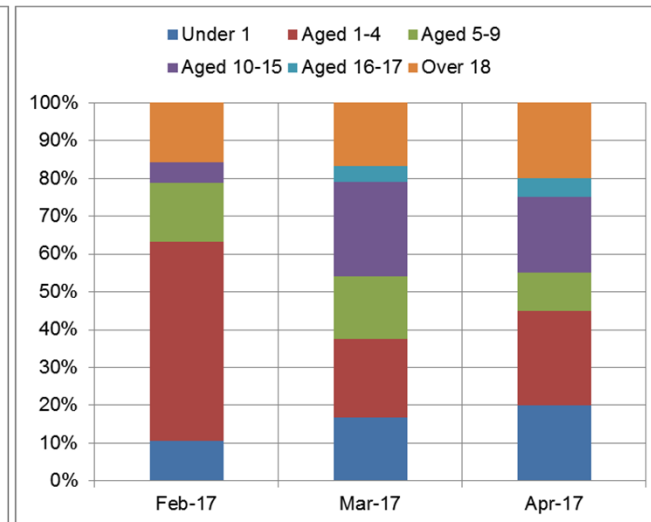
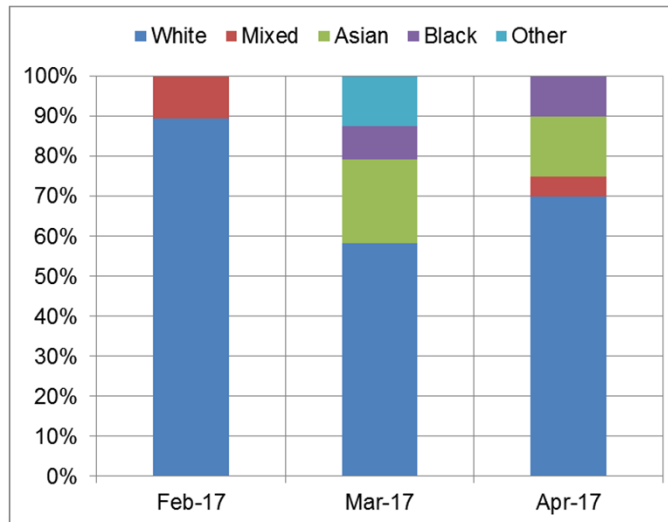
Children in Care

Children Leaving Care - Table 1: 4.04.02 Characteristics

	Feb-17	Mar-17	Apr-17
Female	57.9%	29.2%	55.0%
Male	42.1%	70.8%	45.0%

	Feb-17	Mar-17	Apr-17
White	89.5%	58.3%	70.0%
Mixed	10.5%	0.0%	5.0%
Asian	0.0%	20.8%	15.0%
Black	0.0%	8.3%	10.0%
Other	0.0%	12.5%	0.0%

Age Range	Feb-17	Mar-17	Apr-17
Under 1	10.5%	16.7%	20.0%
Aged 1-4	52.6%	20.8%	25.0%
Aged 5-9	15.8%	16.7%	10.0%
Aged 10-15	5.3%	25.0%	20.0%
Aged 16-17	0.0%	4.2%	5.0%
Over 18	15.8%	16.7%	20.0%



Children in Care

Looked After Children Moves

	Feb-17	Mar-17	Mar Trend	Apr-17	Apr Trend	Target	Performance Overview
4.05.01 Placement Stability Within Year - LAC with three or more placement moves	12.1% (85)	13% (92)	↑	14.6% (102)	↑	10%	<p>Improvement Plan Success Measures: Number of placement moves are in line with statistical neighbours and national comparators. Placement Stability to be in line with statistical neighbours (10%) by December 17</p> <p>In Apr 17 there were 14.6% (102) of LAC with three or more moves in 12 months, higher than the outcome of 13% (92) in Mar 17 and the highest recorded in the past 12 months (73 in May 16). We are currently 4.6% above the 10% target set to be reached by December 17. We would need to reduce the number of children and young people to 70 with 3 or more moves based on April 17 data.</p>
4.05.02 Placement stability within 2 years	73.0%	72.3%	↓	69.2%	↓	n/a	<p>April 17 outcome was 69.2% which was a 3.1% decrease from 72.3% in Mar 17. The percentage had been consistently over 70% since December 16 before dropping in Apr 17.</p>

Children in Care

Looked After Children Moves

	Feb-17	Mar-17	Mar Trend	Apr-17	Apr Trend	Target	Performance Overview
4.05.03 Placement movement reasons (see table 1)	42	45	↑	19	↓	n/a	In April 17 there were 19 Placement Movements, a reduction from 48 in Mar 17. Improvements are: "Carer request Placement End" - Mar 17 (14) to Apr 17 (6) "Change to / Implementation of Care Plan" - Mar 17 (11) to Apr 17 (5) "Other reason" - Mar 17 (11) to Apr 17 (7) "No reason input" - Mar 17 (6) to Apr 17 (0) "Standards of Care Concern" Feb 17 (6) to Apr 17 (0)
4.05.04 Social worker change of LAC in care 12+ Months (average per LAC)	1.09	1.12	↑	1.18	↑		The number of social worker changes has been rising over the past 12 months, with the average number of social worker changes standing at 0.47 in May 16 and increasing to 1.18 in April 17. 12 month comparison (Children figures in brackets): 0 Changes - Decrease May 16 63% - Apr 17 29% (115) 1 Change - Increase May 16 28% - Apr 17 37% (peak Dec 16 46%) (146) 2 Changes - Increase May 16 8% - Apr 17 22% (88) 3 Changes - Increase May 16 1% - Apr 17 6% (23) 4 Changes - Increase May 16 0% - Apr 17 4% (14) 5 Changes - Increase May 16 0% - Apr 17 1% (4) 6 Changes - Increase May 16 0% - Apr 17 2% (6)

	May-16	Jun-16	Jul-16	Aug-16	Sep-16	Oct-16	Nov-16	Dec-16	Jan-17	Feb-17	Mar-17	Apr-17
Allegation (s47) against Carer or Household Member	1	3	0	0	1	1	1	1	0	1	0	0
Carer / Provision Approval Removed	0	0	0	0	4	0	0	1	0	0	0	0
Carer Approval Changed	0	0	2	0	2	0	0	2	1	0	0	0
Carer Request Placement End - Child Behaviour / Needs	2	2	9	8	4	4	2	5	5	9	14	3
Carer Request Placement End - Other Reasons	1	7	0	5	3	1	5	4	0	2	3	3
Change to/ Implementation of Care Plan	8	8	8	13	10	8	11	6	6	8	11	5
Child Requests Placement Ends	1	2	0	3	0	1	2	3	2	0	2	1
Other	5	12	4	7	6	10	5	2	5	12	11	7
Resignation/ closure of Provision of Carer	0	2	0	0	1	0	1	1	0	2	0	0
Responsible/ Area authority Requests Placement End	1	0	0	0	0	0	1	0	0	2	0	0
Standards of Care Concern	0	4	5	1	2	3	1	1	1	6	1	0
No Reason Input	3	5	1	5	4	3	5	1	0	1	6	0
Totals	22	45	29	42	37	31	34	27	20	43	48	19

Head of Service Narrative – Julie Mepham

There is a more settled workforce in the corporate parenting service so performance in terms of change of social worker improves once the child becomes permanently looked after. There is a continued change in the workforce, particularly in the A&I service, which impacts on change of social worker. The “Proceeding Team” has started its work and will deal primarily with Court work ensuring that children retain one worker throughout proceedings. The change in the management of the Legal Gateway and Permanence Panel has impacted positively on children coming into care and placement moves.

Performance around placement stability continues to give cause for some concern and is in part due to the lack of suitable accommodation for our children in Kirklees this is being addressed through the sufficiency strategy which is headed by the Director of Place. An analysis of current placement type and need and a plan for the next 3-5 years is being developed by the Service. A first draft will be presented to the Improvement Board in July 17.

Children in Care

Looked After Children Reviews and Visits

	Feb-17	Mar-17	Mar Trend	Apr-17	Target	Apr Trend	Performance Overview
4.06.01 LAC Reviews Within Statutory Timescale	96.54%	93.56%	↓	92.45%		↓	For Apr 17 the % LAC Reviews within timescale is 92.45% - a decrease of 1.11% from Mar 17 (93.56%). This is the lowest figure since May 16 (98.5%) and has declined steadily since Dec 16.
4.06.03 Child participation in reviews (PN1, 2, 3, 5, 6)	96.27%	91.97%	↓	91.57%		↓	In Apr 17, 91.57% of children participated in LAC reviews. Review participation increased steadily from May 16 (91.34%) to a high of 96.27% in February 2017, before dropping Mar 17 to 91.97%.
4.07.01 Within statutory timescale (currently looking at last 6 weeks) clarity measuring occurrence of 6 weekly visits	61.5%	65.7%	↑	66.5%	85%	↑	<p>Improvement Plan Success Measure: By September 2017, audits completed will evidence that 85% of visits to LAC were completed on time (every 6 weeks), increasing to 85% by December 2017 and by March 2018, this will be 98%</p> <p>% of LAC visited in the last 6 weeks: In Apr 17 66.5% of looked after children have had a statutory visit recorded within the last 6 weeks – a slight increase of 0.8% from March 17. The figure has increased from 36.9% in Jun 16 to 68% in Jan 17. The Improvement Plan Success Measure of 85% and at Apr 17 this is 18.5% below target set for September 17.</p> <p>% of LAC who have had a Statutory Visit in Line with Practice Standards: In Apr 17 81.82% (567) of LAC had a statutory visit recorded, a decrease from Feb 17 (85.5%).</p>

Children in Care

Looked After Children Reviews and Visits (continued...)

	Feb-17	Mar-17	Mar Trend	Apr-17	Target	Apr Trend	Performance Overview
4.07.03 Number of IRO visits held in the month	15.0%	15.0%	↔	7.3%		↓	In April 17 7.3% of LAC had an IRO visit recorded, a 7.7% decrease from 15% in March 17. This is the lowest number recorded since Dec 16 (9.9%).
4.07.04 IRO visits held within timescale (6 months)	60.5%	60.2%	↔	55.0%		↓	In April 17, 55.0% of LAC had a visit from an Independent Reviewing Officer recorded on Carefirst within the last 6 months (based on the cohort of LAC on the last day of calendar month) - This was a 5.2% decrease from Feb 17 (60.2%)

Head of Service Narrative – Kerrie Scraton

Within the Child Protection & Review Unit (CPRU), work has taken place to ensure that the importance of achieving 100% compliance for timeliness of LAC reviews is at the forefront of practice, supervision and team meetings. The allocation process has been changed as it was building in delay. The small decrease is due to the impact of absence in the CPRU, which is being proactively managed.

Children in Care

Missing Looked After Children

	Feb-17	Mar-17	Mar Trend	Apr-17	Apr Trend	Performance Overview
4.09.02 Missing children: a. Number of LAC having at least one Missing episode per month	2.6% (18)	3% (21)	↑	3.6% (25)	↑	a. No of LAC having at least one episode of Missing per month: In Apr 17, 3.6% (25) Looked After Children had at least one episode of Missing per month. This is higher than the previous month of March 2017 3% (21 LAC). The overall trend for the year has been a decrease from 6.1% (41 LAC) in May 16 to a low of 2.6% (18 LAC) Feb 17, then rising to 3.6% (25 LAC) in Apr 17. b. No of LAC going Missing per month, with more than one missing episode in the month (repeat Mispers): In April 17 52% (13) of LAC went missing more than once in the month. The trend is similar over 16/17, with a dip in Nov 16 to 32% (6)
b. Number of LAC that have more than one missing episode in the month (repeat mispers)	44% (8)	57% (12)	↑	52% (13)	↓	
4.09.03 Independent Return Interviews for LAC offered within 72 hours of the child being located	75% (6)	80% (12)	↑	75% (3)	↓	In Apr 17, 75% (3 out of 4) Independent Return Interviews for LAC were offered within 72 hours of the child being located. The average for the last 12 months is 50.5% (119 out of 252)

Head of Service Narrative – Linda Patterson/Service Manager (information provided by Sally Williams, MASH Service Manager)

Increase in missing notifications of 185, 133 of these were repeats. As of 8 June a Missing Pilot has been launched to ensure a quality missing from care service and this will provide clarity to this data.

An identified delay in completing return home interviews has been communicated between professionals. This process has been amended so a return home interview will be offered, unless specifically asked for this not to take place.

Children in Care

Looked After Children Education Outcomes

	Feb-17	Mar-17	Apr-17	Trend	Performance Overview
4.10.01 Attainment LAC Key Stage 2	See table 1	See table 1	See table 1		23.5% of Kirklees Looked After Children achieved Key Stage 2 Reading/Writing & Maths Combined in 2015/16. This is 1.5% below the England LAC rate of 25%
KS4	See table 1	See table 1	See table 1		20% of Kirklees Looked After Children achieved Key Stage 4 5+ A*-C GCSE in 2015/16. This is 1.2% above the England LAC rate of 18.8%
4.10.02 Personal Education Plans up to date (current school age LAC with PEP in the last 6 months)	97.0%	96.0%	93.0%	↓	February 2017 was the highest figure since May 16 (78.3%) and continued to rise steadily until Feb 2017, then declining to 93% in Apr 17.
4.10.02 Initial Personal Education Plan completed within 20 working days of child coming into care		41.4%	42.8%	↑	The figure provided is for a full 12-month period in order to smooth the effect of monthly variations. Of the last 20 children who required an initial PEP, 13 (65%) had it completed on time, better than the 12-month performance.

Table 1: 4.10.01 Looked After Children Attainment

Key Stage 2 2015/16				
	Reading	Writing	Maths	Reading, Writing & Maths Combined
Kirklees LAC	38.2%	47.1%	47.1%	23.5%
Kirklees ALL	71.2%	62.6%	70.1%	57.1%
England LAC	41%	46%	41%	25%
England All	66%	74%	70%	53%

Key Stage 4 / GCSE	
	5+ A*-C GCSE (inc E&M)
Kirklees LAC	20.0%
Kirklees ALL	55.1%
England LAC	18.8%
England All	59.3%

Children in Care

Looked After Children Education Outcomes

	Apr-17	Trend	Performance Overview
4.10.05 Attendance	See table 2	NA	LAC attendance was 93.6% up to April 2017 for the current academic year. 290 out of the cohort of 381 have had 95% attendance or above.
Persistent Absentees	See table 2	NA	% LAC who are persistent absentees was 15.5% in April 2017. 9 of the 59 persistent absentees were borderline (between 85% and 90% attendance).

Table 2: 4.10.05 Attendance and Persistent Absence

Definition: LAC of school age and in care for the full current academic year	April 2017
LAC cohort	381
LAC percentage attendance	93.6%
Number of LAC who are persistent absentees	59
Percentage of persistent attendees	15.5%

Children in Care

Looked After Children Education Outcomes

	Feb-17	Mar-17	Apr-17	Trend	Performance Overview
4.10.07 Pupils not in full time educational provision with reasons	See table 3	See table 3	See table 3	↓	The 2015/16 HT6 cohort, there are 402 LAC children with 4.23% (17) children not in full time education. This is higher than 2014/15 HT6 cohort of 345 LAC children with 2.32% (8) children . There is a substantial increase in use of "Other" reason for not being in education, from 0.29% 2014/15 HT6 to 2.74% 2015/16 HT6.

Table 3: 4.10.07 Pupils not in full time education provision

Part-time Reason	Apr-16	Feb-17	Mar-17	Apr-17
Mental health needs	1 0.48%	1 0.43%	1 0.41%	1 0.43%
Medical needs other than MH	1 0.48%	1 0.43%	0 0.00%	1 0.43%
Pregnancy or young mother	1 0.48%	0 0.00%	1 0.41%	1 0.43%
Staged reintegration new sch	1 0.48%	4 1.72%	3 1.24%	3 1.28%
Behaviour difficulties	6 2.90%	5 2.15%	5 2.07%	2 0.85%
Social difficulties	1 0.48%	1 0.43%	1 0.41%	1 0.43%
Stg Reint Chronic Non Att	0 0.00%	1 0.43%	2 0.83%	3 1.28%
Other	6 2.90%	5 2.15%	7 2.90%	8 3.40%
Total	17 8.21%	18 7.73%	20 8.30%	20 8.51%
LAC of statutory school age resident in Kirklees	207	233	241	235

Head of Virtual School Narrative – Janet Tolley

In 2016, attainment at KS1 for Kirklees LAC reaching the expected standard or above was above national LAC for Reading and Science but below national LAC in Writing and Mathematics. The gap between all Kirklees children and the Virtual School is less than the national gap for Reading and Science, in-line for mathematics but below for writing.

In 2016, attainment at KS2 for Kirklees LAC reaching the expected standard or above in Reading, Writing and Mathematics combined, was better than the West Yorkshire outcome, in line with national LAC but below Statistical Neighbours (by 2 pupils).

The attainment gap in Kirklees (between all children and LAC) was less than the national attainment gap for all indicators.

The Local Authority Interactive Tool (LAIT) shows the Kirklees outcome to be in the following quartile nationally:

- Reading: Quartile D (Rank 58)
- Writing: Quartile B (Rank 40)
- Mathematics: Quartile B (Rank 32)
- Grammar, Punctuation & Spelling: Quartile C (Rank 63)
- Reading Writing & Mathematics: Quartile D (Rank 37)

In 2016, average progress scores at KS2 for Kirklees LAC:-

Reading: The average progress score for Kirklees LAC is better than Statistical Neighbours but below that for national LAC. However, the LAC outcome is better than that for all Kirklees children.

Writing: The average progress score for Kirklees LAC is in-line with Statistical Neighbours but below that for national LAC. However, the LAC outcome is better than that for all Kirklees children.

Mathematics: The average progress score for Kirklees LAC is better than Statistical Neighbours and national LAC. However, the LAC outcome is just below that for all Kirklees children.

The Local Authority Interactive Tool (LAIT) shows the Kirklees outcome to be in the following quartile nationally:

- Reading: Quartile C (Rank 69)
- Writing: Quartile C (Rank 80)
- Mathematics: Quartile B (Rank 47)

Head of Virtual School Narrative – Janet Tolley

In 2016, attainment at KS4 for Kirklees LAC:-

- Achieving A*C in both English and Mathematics GCSE was significantly above all comparator data. In addition to this, the attainment gap between Kirklees LAC and all Kirklees Children (38.5) is better than the equivalent national data (41.8).
- Entering the English Baccalaureate: 11.4% of Kirklees LAC were entered for EBacc which is significantly higher than all comparators.
- Achieving the English Baccalaureate: 5.7% attained the EBacc which is significantly higher than all comparators.

The Local Authority Interactive Tool (LAIT) shows the Kirklees outcome to be in the following quartile nationally:

% achieving A*C in both English and Mathematics GCSE: Quartile B (Rank 22) NB: (EBacc data not available via LAIT)

The attainment 8 score is higher than all comparator averages.

The Local Authority Interactive Tool (LAIT) shows the Kirklees outcome to be in the following quartile nationally: LAC KS4 average Attainment 8 score: Quartile A (Rank 25)

In 2016, progress at KS4 for Kirklees LAC:- The average Progress 8 score is higher than all comparator averages.

The Local Authority Interactive Tool (LAIT) shows the Kirklees outcome to be in the following quartile nationally:

- LAC KS4 average Progress 8 score: Quartile A (Rank 26)
- LAC overall absence: Quartile B (Rank 72)
- LAC unauthorised absence: Quartile B (Rank 75)
- LAC who are classed as persistent absentees: Quartile B (Rank 51)

Absence of LAC is significantly lower than the overall CiN for Kirklees. It is also interesting to note that the LAC population performs better than the general population against these measures, both in Kirklees and nationally.

Children in Care

Looked After Children Health

	Feb-17	Mar-17	Mar Trend	Apr-17	Apr Trend	Performance Overview
4.11.11 Dental Checks within last 12 months - timeliness	86.4%	89.4%	↑	86.7%	↓	In April 17, 86.7% (507) of the current COHORT (LAC 12+ months) had a recorded dental check within the past 12 months on Carefirst - a decrease from Mar 2017 (89.4%). The overall trend has been a steady increase since June 2016 (66.8%)..
4.11.12 Initial health assessments completed on time - within 20 days	83.9%	84.0%	↔	88.0%	↑	In April 17 88.0% of Initial Health Assessments had been completed within 20 working days of the child coming into care - this is higher than Mar 17 (84%), but lower than 93.4% in May 16
4.11.13 Annual health assessments – Under 5’s 6 monthly up to date	92.3%	97.8%	↑	99.3%	↔	For LAC aged Under 5 the Percentage of Developmental Assessments Up to Date was 99.3% in Apr 17, which was the higher than 97.8% in Mar 17. For LAC aged 5 + Over Health Assessments up to Date was 97.5% in Apr 17 and has continue to improve month on month from 94.7% in Oct 16.
4.11.16 Number of LAC who have been in care more than 12 months and identified as having a substance misuse problem during the last year	1.60% (5)	1.29% (4)	↓	1.22 % (4)	↔	In April 17, 1.22% (4) of LAC who have been in care more than 12 months were identified as having a substance misuse problem during the last year - this is slightly lower than Mar 17 1.29% (4). England rates 15/16 are 4%
4.11.17 Number of LAC children: a. offered and accepted a substance misuse intervention	4	4		3		Number Of LAC Received a SMU Intervention: In April 17 3 LAC receive a substance misuse intervention - this figure has decreased slightly since March 17 (4). This is improvement on the number of children accepting intervention between May 16 and Jan 17.
b. Offered and refused substance misuse intervention during the 12 months period prior to month	5	5		4		Number of LAC offered, but refused, a SMU Intervention: In April 17 4 LAC were offered and refused a substance misuse intervention during the 12 months period prior - this is the lowest number of LAC refusing substance misuse support since Oct16 (3).

Head of Service Narrative – Gill Addy, LAC Nurse**4.11.11 Dental Checks within Last 12 Months**

The main opportunity for this collection is at the review health assessment, also at LAC reviews, stat visits and carers reporting by phone. This year, BSOs have been contacting carers directly from the monthly data sheet. This has resulted in improved collection figures. The slight increase in April 17 is due to this fact, the figure will fluctuate continually throughout the year, but the LAC team are ensuring they are contact carers. An issue is that contact numbers for carers are not being kept up to date on CareFirst.

4.11.12 Initial Health Assessments Completed on Time

Data provided monthly to LAC Nurse team by Locala shows Feb 95% , March 100% and April 100%. In February was 1 child with a late IHA, (with a reason of social worker had left and not notified carer). The Business Support Officer inputs assessments the day after clinic takes place (with exception of BSO annual leave). PIU will investigate possible issues with the data in liaison with LAC Nurse Team to ensure dates are being input correctly.

4.11.13 Annual health assessments – Under 5's 6 monthly up to date

Data provided monthly to LAC Nurse team by Locala shows 100% for April 17. The CareFirst data may be a result of lag in returns at month end. There were no Out of Area Developmental health assessments in April 17. A 30 hours LAC nurse has been funded for 12 months and started in post 1 May 2017. This will allow us to carry out the Review Health Assessments (RHA) for children living outside Kirklees, but within reasonable travelling distance (Bradford / Wakefield/ Leeds/ Manchester). We have seen a downturn in figures in RHAs where they are completed on our behalf in other LA areas.

4.11.16 Number of LAC who have been in care more than 12 months and identified as having a substance misuse problem during the last year and 4.11.17 Substance Misuse by LAC & 4.11.17 Offered and Accepted/Refused Services for Substance Misuse

There may be a number of LAC who use substances for recreational purposes and do not perceive that it is problematic or may not disclose use at all. It is the prolonged, problematic use that is recorded. The National average is 4% (many areas do not send in data nationally as it is hard to quantify with the strict guidelines). We have a substance misuse worker attached to vulnerable children including LAC. This worker attends the children's homes monthly with the LAC nurses and takes individual referrals. Training has also been given to Personal Advisers and residential staff, with a plan to widen to Social Workers.

Children in Care

Looked After Children Convictions

	Feb-17	Mar-17	Apr-17	Trend	Performance Overview
4.12.01 Number of young people who have been looked after continually for 12 months or more aged between 10 and 17 who have offended and received a substantive outcome	See table	See table	See table	↓	<p>(NOTE: no new data available since CPB in May 17)</p> <p>From Jan to March 17, 0.87% (3) YP were looked after continually for 12 months or more aged between 1- and 17 who have offended and received a substantive outcome.</p> <p>This figure is lower than April to June 16 data of 1.75% (6). This trend continued for July to Sept 16 and Oct to Dec 16 also.</p> <p>The % cumulative Offending data figure is 6.14% for period April 16 to March 17. There is no comparison data available.</p>

Date period	Cohort	No of yp offending	% offending (qtr)	% offending (yr) Cumulative Figure
April to June 16	342	6	1.75%	1.75%
July to Sept 16	342	6	1.75%	3.50%
Oct to Dec 15	342	6	1.75%	5.25%
Jan to March 17	342	3	0.87%	6.14%

Head of Service Narrative – Richard Ian Smith May 2017 (no change in data since last Board)

LAC: The number of LAC young people who have offended in the 4th quarter is 0.87% which compares with 0.93% at the same period last year. For the year 2016/17 the figure is 6.14% This is a slight increase on the total for the year 2015/16 which was 5.9% For the year 2016/17 44.4% of LAC young people completed their orders successfully, compared to 29% for the previous year 2015/16. Over the same period 2016/17 64% of the general population completed orders successfully compared with 69.7% 2015/16. Thus, the year on year increase in successful completions by LAC from 29% in 15/16 to 44% in 16/17 gives a clear indication that the YOT is achieving its aim of bringing the successful completion rate of LAC young people more into line with that of the general YOT population.

	Feb-17	Mar-17	Mar Trend	Apr-17	Apr Trend	Performance Overview
Performance Intelligence Unit staff have been working closely with the Leaving Care team recently; attending meetings specifically held in order to improve performance.						
5.01.01 Care Leavers	206	206	n/a	212	n/a	In Apr 17, 212 Care Leavers are receiving leaving care services. This is higher than Feb 17 & Mar 17. The overall trend is a steady increase in since May 2016 (175).
5.01.02 Characteristics of care leavers - gender, age range & ethnicity	See table 1	See table 1		See table 1		<p>Gender: April 17 43.9% (93) are female and 56.1% (119) are Male.</p> <p>Ethnicity: White 74.5% (157) April 17, the trend is decreasing slightly since May 16 (77.1%).</p> <p>Mixed 12.3% (26) April 17, the trend is increasing slightly since May 16 (11.4%)</p> <p>Asian 8.5% (18) April 17. Average for last 12 month is 8%.</p> <p>Black 3.8% (8) April 17, the trend is decreasing slightly since May 16 (2.3%)</p> <p>Other - 0.9% for April 17. (2). Average for last 12 month is 0.8%.</p> <p>Age: Age 16-18: 29.7% at April 17, the trend is increasing over the past year since May 16 (8.6%).</p> <p>Age over 18: 70.3% at April 17, the trend is decreasing steadily over the past year since May 16 (91.4%)</p>
04.04.04 Discharges from Care – Duration in Care) (Prev 5.01.03 Care Leavers Duration in Care	See table 2	See table 2		See table 2		There are no emerging patterns in terms of Duration in Care. A Year on Year comparison may show any significant changes in Care Duration. Since May 16 61.3% of care leavers have been in care for less than 12 months.
5.01.04 Children in care aged 17 years with a Personal Advisor	50.77%	40%	↓	75.41%	↑	In April 17, 75.41% of children had an allocated Personal Advisor. This is a improvement of 35% from March 17 (40%).



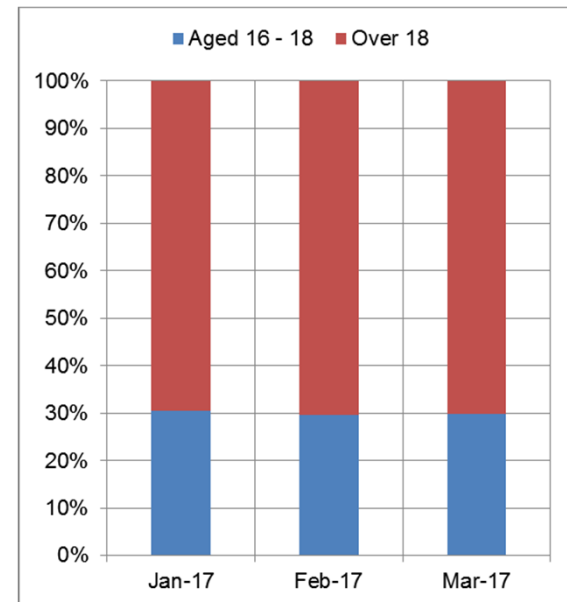
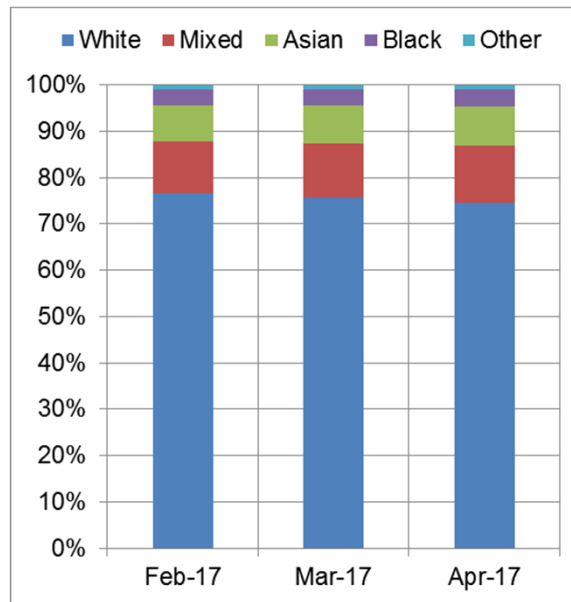
Care Leavers and Adoption

Care Leavers: Table 1 - 5.01.02 Characteristics of care leavers

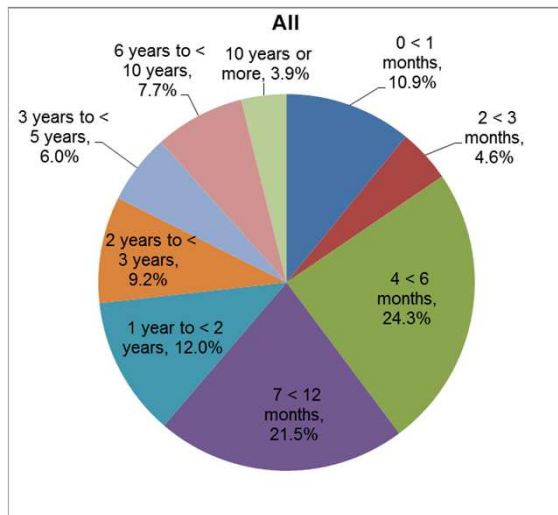
	Feb-17	Mar-17	Apr-17
Female	44.2%	43.2%	43.9%
Male	55.8%	56.8%	56.1%

Ethnicity %	Feb-17	Mar-17	Apr-17
White	76.7%	75.7%	74.5%
Mixed	11.2%	11.7%	12.3%
Asian	7.8%	8.3%	8.5%
Black	3.4%	3.4%	3.8%
Other	1.0%	1.0%	0.9%

Age Range	Jan-17	Feb-17	Mar-17
Aged 16 - 18	30.6%	29.6%	29.7%
Over 18	69.4%	70.4%	70.3%



Duration Range %	Feb-17	Mar-17	Apr-17
0 < 1 months	10.5%	29.2%	15.0%
2 < 3 months	10.5%	0.0%	0.0%
4 < 6 months	10.5%	25.0%	15.0%
7 < 12 months	15.8%	12.5%	35.0%
1 year to < 2 years	5.3%	12.5%	10.0%
2 years to < 3 years	42.1%	4.2%	15.0%
3 years to < 5 years	5.3%	0.0%	0.0%
6 years to < 10 years	0.0%	16.7%	0.0%
10 years or more	0.0%	0.0%	10.0%



Care Leavers and adoption

Care Leavers

	Feb 17	Mar 17	Mar Trend	Apr 17	Apr Trend	Performance Overview
5.01.08 LA in touch	86.4%	84.5%	↓	95.8%	↑	In April 17, 95.8% of care leavers were still in touch with the Local Authority - this is an increase of 11.3% from March 17 (84.5%).
5.01.09 In suitable accommodation	79.1% (163)	77.7% (160)	↓	86.3% (183)	↑	In April 17, 86.3% (183) of care leavers were in suitable accommodation - this is an increase of 8.6% from March 17, 77.7% (160).
5.01.10 Care Leavers Employment, Education and Training	40% (83)	38% (78)	↓	44.8% (95)	↑	In April 17 44.8% (95) of care leavers who were receiving leaving care services were in education, employment or training (EET)- this is an increase of 17 children from March 17 38% (78).
5.01.11 Number of Care Leavers with a Pathway Plan - that is up to date	89.8% (185)	88.9% (183)	↓	92% (195)	↑	In April 17, 92% of care leavers had a completed Pathway Plan - this is an increase from 88.9% March 17.

Head of Service Narrative – Julie Mepham

Work with Performance Information Unit has ensured that the right information is captured from the Personal Advisor (PA) forms to improve recording and allow meaningful analysis of the service position. Our current position is poor but improving.

There has been a marked improvement in the percentage of young people who are in touch with the service. Only 4.2% are now NOT in touch. The percentage in suitable accommodation has increased by 8.6% (23 young people) and 17 more young people are now recorded as in EET.

There has been an improvement of 12 in the number of Care Leavers with a pathway plan recorded. Whilst compliance is improving, the next step is to ensure that the quality of plans is good or better.

	Feb-17	Mar-17	Mar Trend	Apr-17	Apr Trend	Target	Performance Overview
5.02.01 Number of children adopted as a percentage of children leaving care	17.0% (45)	16.5% (45)	↔	16.7% (46)	↔		In the 12 months to April 17, 46 children left care as a result of Adoption or 16.7%, a slight increase from March 17. There has been a steady increase since 12 month low in Nov 16 of 15.2% (39). However, it remains below comparator data (Statistical Neighbours 2015/16 = 21.4%)
5.02.02 Characteristics of adopted children - gender, age range & ethnicity	See table 1	See table 1		See table 1			<p>Gender: April 17, of children adopted, 58.7% were male and 41.3% were female. In the past 12 months the average was 39.5% females to 60.5% males adopted.</p> <p>Ethnicity: The adoption of children from "Mixed" ethnicities was 17.4% in Apr 17, year average 17.4%. "Other" ethnicities was 2.2% in April 17, year average 1.9%. "White" ethnicities was 80.4% in Apr 17, year average 80.7%.</p> <p>Age: Children aged <1, was 17.4% in Apr 17, which has increased steadily since 7.1% in May 16. Year average is 8.8%. Children aged 1-4 was 69.6% in Apr 17, this is higher than year average of 66.7%. Children aged 5-9 was 13% in Apr 17, the trend has been a decline monthly from 31% in May 16. Year average is 24.7%</p>

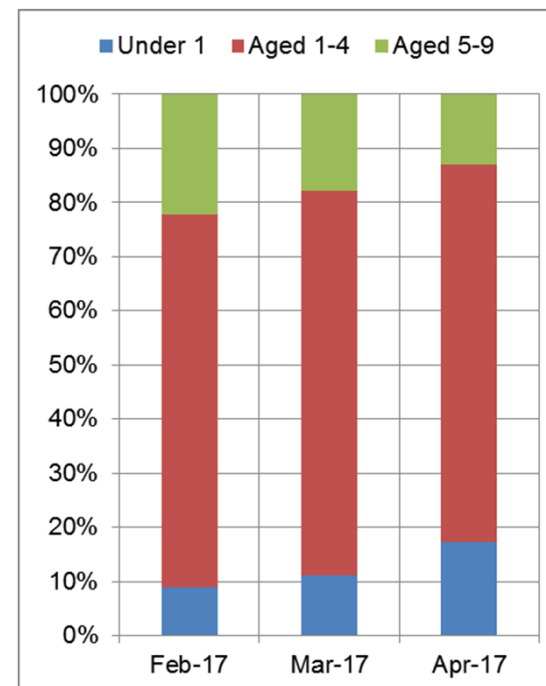
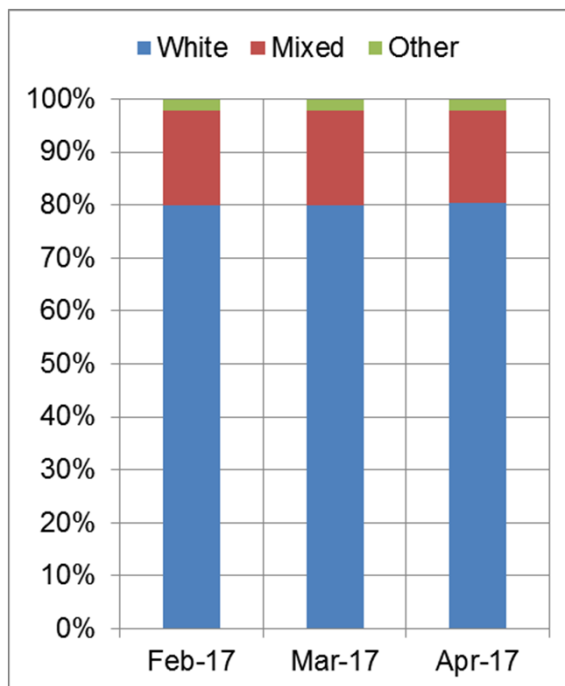


Table 1 - 5.02.02 Characteristics of adopted children

	Feb-17	Mar-17	Apr-17
Female	40.0%	42.2%	41.3%
Male	60.0%	57.8%	58.7%

	Feb-17	Mar-17	Apr-17
White	80.0%	80.0%	80.4%
Mixed	17.8%	17.8%	17.4%
Other	2.2%	2.2%	2.2%

	Feb-17	Mar-17	Apr-17
Under 1	8.9%	11.1%	17.4%
Aged 1-4	68.9%	71.1%	69.6%
Aged 5-9	22.2%	17.8%	13.0%

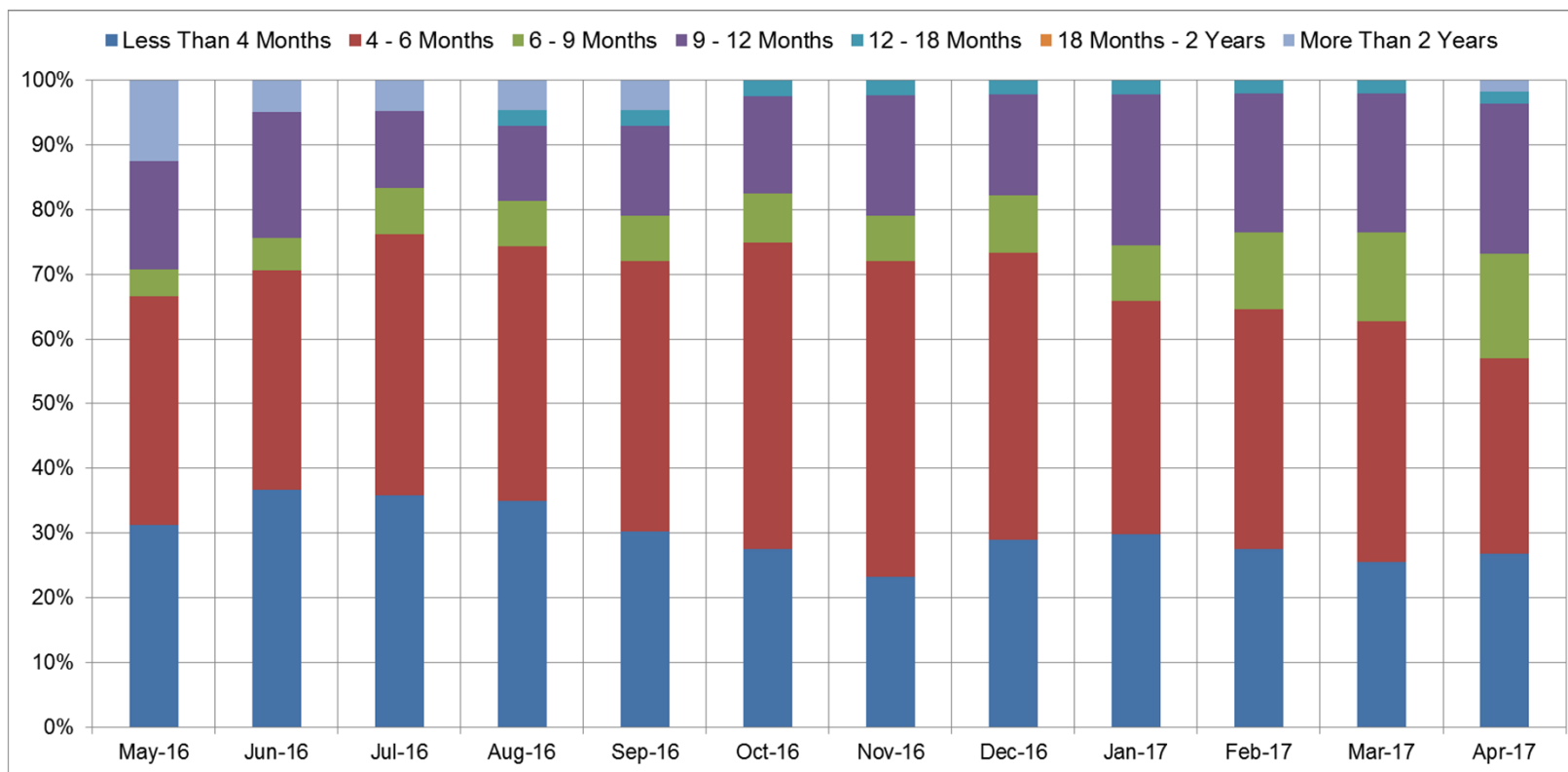


	Feb-17	Mar-17	Mar Trend	Apr-17	Apr Trend	Target	Performance Overview
5.02.03 A1 Average timescale (days) between the child coming into care and being placed with the adopter	533.4	513.6	↓	370.0	↓	523	<p>Improvement Plan Success Measure: By 31 December 2017 the average time between a child entering care and moving in with its adoptive family is in line with our statistical neighbours/England (522/523 days)</p> <p>There has been improvement month on month from 1,033 days in June 16 to 370 days in April 17.</p>
5.02.04 Average timescales between the child coming into care and the ADM decision	See table 2	See table 2		See table 2			<p>The number of children in April 17 was 56, which is higher than Mar 17 (51). The trend has seen an increase month on month from a low of 41 children in June 16.</p> <p>There has been a decline in number of children having decision in less than 6 months, and an increase in number of children having decisions taking 6+ months or longer.</p>



Care Leavers and Adoption

Table 2 - 5.02.04 Average timescales between the child coming into care and the ADM decision



	Feb-17	Mar-17	Mar Trend	Apr-17	Apr Trend	Target	Performance Overview
5.02.05 A2 Average timescale (days) between Kirklees council receiving court authority to place a child and the council deciding to match the child with an adoptive family	160.1	153.9	↓	146.6	↓	243	<p>Improvement Plan Success Measure: By 31 December 2017, the average time between receiving court authority to place a child and deciding on a match to an adoptive family is in line with our statistical neighbours/England (248/243 days). Note: Kirklees provisional outcome for 2015/16 is 337 days.</p> <p>In Apr 17 there were 146.6 days between receiving court authority to place a child and deciding on a match to an adoptive family. In line with Improvement Plan Success Measure, this rate is below the Statistical Neighbours/England rates for 2015/16 of 248/243 days.</p>
5.02.06 A3 The percentage of children who waited less than Government threshold 14 months between entering care and moving in with their adoptive family	72.2%	73.7%	↑	77.8%	↑		In April 17 the rate was 77.8%. There has been an increase month on month since May 16 (46.2%).
5.02.09 How many children are placed in their adoptive placements	21	25	↑	21	↓		In April 17, 21 children were placed, which is a decrease of 4 from March 17 (25). This figure has reduced month on month since May 16 (29 children). The year average is 26 children per month.
5.02.10 How many children are waiting to be placed in adoptive placements	27	27	↔	20	↓		In April 17 there were 20 children. This is lower than Feb 17 and Mar 17 figure of 27 children. This is the lowest figure since Oct 16 (15 children).

Head of Service Narrative – Linda Patterson

5.02.03 A1 Average timescale (days) between the child coming into care and being placed with the adopter:

There continues to be evidence of an improving trend in timescales with current performance showing 370 days from a child coming into care and being placed with an adopter, significantly better than the DfE threshold. A representative of One Adoption (West Yorkshire) is now a member of our Legal Gateway and Permanence Panel. One Adoption is tracking all Kirklees children who have a provisional or confirmed plan for adoption.

5.02.05 A2 Average timescale (days) between Kirklees council receiving court authority to place a child and the council deciding to match the child with an adoptive family:

There continues to be improvement in this area with current performance being at 146.6 days and is improving towards the DfE threshold of 121 days. This cohort remains small and any delays in placing a child after court authority to place, impacts on the performance. We are working in collaboration with One Adoption West Yorkshire to ensure timely matches to carers. For example, at 12th June Adoption Panel one child was matched after 38 days from the making of the Placement Order and the other after 75 days.

Sufficiency

Adopters

	Feb-17	Mar-17	Mar Trend	Apr-17	Apr Trend	Target	Performance Overview
6.01.01 Number of adopters approved by Kirklees Council (approved by CFADOPT) during a 12 month rolling period	19	24	↑	22	↓		22 adopters were approved in Apr 17. This figure has been increasing since a low of 15 approvals in Sept 16. This figure is still lower than the 2015/2016 rates which saw a decline from 41 adopters approved in May 15.
6.01.02 Initial enquiries	140	132	↓	116	↓		There were 116 initial enquiries during the 12 month rolling period running up to April 2017 - this is lower than 132 in March 17. The number has declined month on month from 221 initial enquiries at May 16.
6.01.03 Started and completed approval process in 12 month period Stage 1	15	16	↑	16	↔		<p>Stage 1: At April 17, 16 Stage 1's were completed (same in March 17), this is slightly higher than 15 in Feb 17. The average time to complete Stage 1 at April 17 is 123.7, this has increased month on month from 116.9 in Oct 16.</p> <p>Stage 2: At April 17, 23 Stage 2's were completed (same in March 17). The average time to complete Stage 2 at April 17 is 86.4 (no change from March 17), however, this has increased month on month from 74.8 in Oct 16.</p>
Average duration Stage 1	122.3	116.3	↓	123.7	↑		
Stage 2	19	23	↑	23	↔		
Average duration Stage 2	82.5	86.4	↑	86.4	↔		

Sufficiency

Adopters

	Feb-17	Mar-17	Mar Trend	Apr-17	Apr Trend	Target	Performance Overview
6.01.05 Completion of process from initial enquiry	13.57% (19)	18.18% (24)	↑	18.97% (22)	↑		In April 17 the rate was 18.97%. The trend is improving from 8.6% in May 16, it dipped to a low of 7.43% in Sept 16, but has steadily improved month on month since.
6.01.06 Number of applications lodged within 10 weeks	62.5% (10)	62.5% (10)	↔	26.7% (4)	↓		In April 17 the figure was 26.7% (4). This is much lower than Feb and March figure of 62.5% (10), which had improved from 41.2%(7) in May 16

Head of Service – Sarah Johal, Service Manager, One Adoption Yorkshire

Kirklees is no longer responsible for the recruitment, assessment and approval of adopters. Since January 2017, all prospective adopters who have approached Kirklees have been recorded within the Leeds City Council's database (Leeds are the host for the One Adoption Agency). A standardised process has been in place across the 5 Local Authorities in West Yorkshire in terms of recruiting and assessing adopters in anticipation of the implementation of One Adoption from 1 April 2017.

Going forward, performance information regarding the timescales for the assessment and approval of adopters will need to be requested from One Adoption as this data will not be collated by Kirklees Council.

Sufficiency

Foster Carers

	Feb-17	Mar-17	Mar Trend	Apr-17	Rolling 12 months	Apr Trend	Performance Overview
6.02.01 Activity During Period: a. Initial contacts in month	19	29	↑	15	281	↓	Initial Contacts were lower in April 17 (15) compared to Mar 17 (29). The rolling 12 month average per month is 23. Foster Carers Initial Response were lower in April 17 (18) Compared to Mar 17 (30). Average per month is 19. Awaiting Essential info Part 1 in month was higher in April 17 (11) compared to March 17 (7).
b. Foster carer initial response in month	17	30	↑	18	228	↓	
c. Awaiting essential info part one in month	11	7		11	52		
6.02.04 Initial Visits: Allocated in month	9	11	↑	5	89	↓	Initial Visits Allocated: In April 17, 5 visits were allocated, which was lower than Mar 17 (11) and Feb 17 (9) Initial Visits Completed: In Apr 17, 9 initial visits were completed, which was lower than Mar 17 (11) and Feb 17 (12).
Completed in month	12	11	↑	9	93	↓	
6.02.06 Stage 1 assessments: Opened in month	8	2	↓	0	19	↓	Assessment Events Opened: In Apr 17, Zero Assessment Events were opened, compared to Mar 17 (2) and in Feb 17 (8). The figure was Zero in May and June 16 and the rate increased slowly over the past 12 months, with a spike of 8 in Feb 17, before reducing. Assessment Events Completed: In Apr 17, 1 Assessment Event was completed, compared to Mar 17 (3) and Feb 17 (1). The figure was 2 in May 16 and the rate has increased slightly over the past 12 months, with spikes of 4 in July 16 and Nov 16.
Completed in month	1	3	↑	1	23	↓	

Sufficiency

Foster Carers

	Feb-17	Mar-17	Mar Trend	Apr-17	Rolling 12 months	Apr Trend	Performance Overview
6.02.07 Approvals Total	7	10	↑	6	115	↓	<p>In House Approvals: In Apr 17, there were 2 approvals. The figure was zero in both Mar and Feb 17.</p> <p>Other Approvals: In Apr 17, there were 4 approvals. The figure was 13 in May 16 and the rate has varied over the past 12 months, with spike in Jun 16 (17).</p>
In-house approvals	0	0	↓	2	17	↑	
other approvals (IFA/OLA)	7	10	↑	4	98	↓	
6.02.09 Placements split : In-house foster placements	213	217	↑	225	n/a	↑	<p>There were 225 In House Placements in April 17. This is the highest figure since Jul 16 (224).</p> <p>Friends & Family Placements: In Apr 17, there were 91 F&F Placements. The figure was 90 in Mar 17. The number has decreased during the past 12 months from 80 in May 16 to a low of 65 in Oct /Nov 16.</p> <p>Independent Fostering Agency Placements: In Apr 17, there were 163 Independent Fostering Placements, which is lower than Mar 17 (188). The figure was 161 in April 16 and the rate had steadily increased month on month before dropping in April 17.</p>
Family and friend placements	86	90	↑	91	n/a	↑	
IFA placements	186	188	↑	163	n/a	↓	

Head of Service Narrative - Rob Finney – Service Manager / Julie Mepham – Head of Service

Initial contacts have dropped in April 17 to 15, which is below the year average of 23. Data integrity checks are being carried out on this area of recording.

Our target for the next three years is to recruit an additional 22 carers (net gain) per year over the next three years. We currently have 22 Form F assessments being undertaken. This potentially puts us on track for well exceeding our first year target.

The number of foster placements has increased from 217 in March to 225 in April and Independent Fostering Agency Placements have reduced from 188 in March to 163 in April. I would expect that as our pool of carers grows then we will make more internal placements at a ratio of up to 1.5 children per carer. If the LAC population remains stable this will mean that we will be able to reduce the number of IFA and external placements to ensure that children are looked after in Kirklees (wherever possible). This shift will also make significant financial savings.

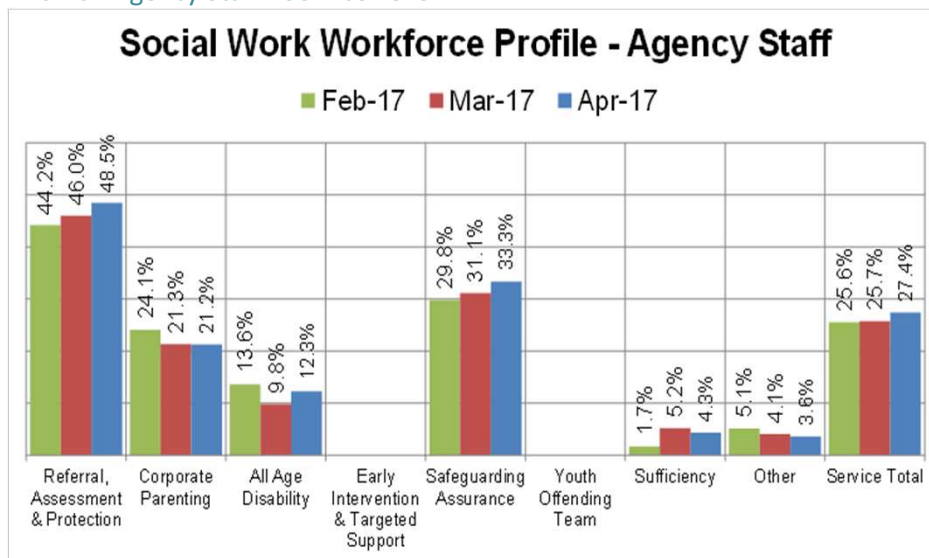
More focused recruitment activity is taking place with further development work in the service concentrating on 4 areas: compliance, quality assurance, business planning and leadership and management. There is good reason to be optimistic that the service can become good given the time to implement and embed change, building on good resources and many areas of positive practice already in place.

Workforce

Capacity

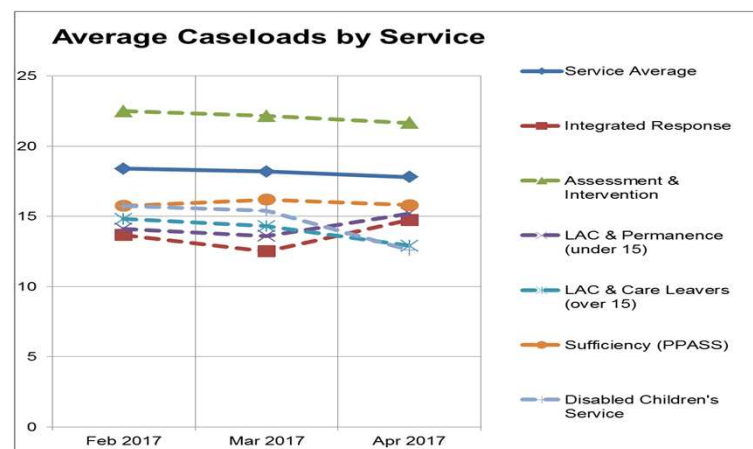
	Feb-17	Mar-17	Apr-17	Target	Trend	Performance Overview
7.02.02 Agency Staff - Service Level	25.6%	25.7%	27.4%	10%	No clear trend	The service total has increased to 94.62 FTE agency staff, equating to 27.4% of the overall Social Work Capacity of 345.70 FTE. The majority of agency staff are in Assessment & Intervention (69.62 FTE). The agency percentage has been impacted by the loss of Kirklees Social Work staff to One Adoption as part of the regional arrangements.
7.02.04 Caseload	18.4	18.2	17.8		No clear trend	The service average caseload continues to fluctuate around the 18 case mark. Also most teams show a fluctuating picture. There has been a further reduction in the Disabled Children's Service Social Worker caseloads. At the end of April 2017, the highest caseloads were seen in Assessment & Intervention Teams 5 and 11 at 30.7 and 30.4 children respectively.
Please see separate Workforce and Caseload report for service narrative. See Table 1 over Page for LAC allocations on Carefirst and FSCP staffing						

7.02.02 Agency Staff - Service Level



7.02.04 Caseload

	Feb 2017	Mar 2017	Apr 2017
Service Average	18.4	18.2	17.8
Integrated Response	13.7	12.5	14.8
Assessment & Intervention	22.5	22.2	21.7
LAC & Permanence (under 15)	14.1	13.6	15.2
LAC & Care Leavers (over 15)	14.8	14.3	12.9
Sufficiency (PPASS)	15.8	16.2	15.8
Disabled Children's Service	15.7	15.4	12.6



Workforce

Capacity: Table 1 - LAC allocations on Carefirst and FSCP staffing fte.

LAC Child Allocations – by Primary Worker

Data as of 06/04/2017:

Team	Allocated LAC
Allocations Outside of Team Structure	2
Assessment and Intervention Team 01	7
Assessment and Intervention Team 02	14
Assessment and Intervention Team 03	5
Assessment and Intervention Team 04	20
Assessment and Intervention Team 05	11
Assessment and Intervention Team 06	4
Assessment and Intervention Team 07	17
Assessment and Intervention Team 09	17
Assessment and Intervention Team 10	17
Assessment and Intervention Team 11	23
Assessment and Intervention Team 12	5
Assessment and Intervention Team 13	28
Assessment and Intervention Team 14	23
Disabled Children Team 2	22
Disabled Children Team 3	25
LAC and Care Leavers - LAC Over 15 Team 1	64
LAC and Care Leavers - LAC Over 15 Team 2	71
LAC and Permanence Team 1 - LAC Under 15	72
LAC and Permanence Team 2 - LAC Under 15	87
LAC and Permanence Team 3 - LAC Under 15	107
LAC and Permanence Team 4 - Children's Adoption and Family Finding Team	39
LAC and Permanence Team 5 - Connected Persons Support Team	10
Advanced Practitioner Team	7
PPASS Connected Persons Assessment Team	1
Unallocated (blank)	1
Grand Total	699

Row Labels	FTE Total	# Workers
Advanced Practitioner Team	4	4
Assessment and Intervention FDAC Team	2.5	2
Assessment and Intervention Skylakes Team	7	7
Assessment and Intervention Team 01	7.81	7
Assessment and Intervention Team 02	11	9
Assessment and Intervention Team 03	8.5	8
Assessment and Intervention Team 04	8	9
Assessment and Intervention Team 05	6	7
Assessment and Intervention Team 06	8	6
Assessment and Intervention Team 07	6	7
Assessment and Intervention Team 09	6.5	8
Assessment and Intervention Team 10	7	7
Assessment and Intervention Team 11	7.5	11
Assessment and Intervention Team 12	6	6
Assessment and Intervention Team 13	10	10
Assessment and Intervention Team 14	7.81	10
Child Protection & Review Unit	20.5	
Disabled Children Team 1	3	3
Disabled Children Team 2	10	10
Disabled Children Team 3	8.8	10
Integrated Response MASH Team	1	1
LAC and Care Leavers - Care Leavers Team 1	10	10
LAC and Care Leavers - Care Leavers Team 2	6.6	6
LAC and Care Leavers - Care Leavers Team 3 (EET)	1	1
LAC and Care Leavers - LAC Over 15 Team 1	6.5	7
LAC and Care Leavers - LAC Over 15 Team 2	7	7
LAC and Permanence Team 1 - LAC Under 15	7.5	9
LAC and Permanence Team 2 - LAC Under 15	6.5	7
LAC and Permanence Team 3 - LAC Under 15	7	7
LAC and Permanence Team 4 - Children's Adoption and Family Finding Team	7	7
LAC and Permanence Team 5 - Connected Persons Support Team	7	7
LAC and Permanence Team 6 - Placement Support Team	3.81	
PPASS Adoption Recruitment Team	4	6
PPASS Adoption Support Team	2.79	4
PPASS Connected Persons Assessment Team	8.5	11
PPASS Fostering Recruitment Team	4.5	8
PPASS Fostering Supervisory Team	9.31	10
PPASS Placement Team	1.5	
Referral & Response CSE Hub	4	